

PRIMARY SCHOOL
LEAVING EXAMINATIONS



2014
PROVISIONAL
SUMMARY
OF RESULTS

14

The Primary School Leaving Examination (PSLE) is a criterion referenced examination that is administered to all learners who have completed the Ministry of Education and Skills Development (MOESD) 7-year primary school programme. PSLE candidates sit examinations in seven subjects, namely: Setswana, English, Mathematics, Science, Social Studies, Agriculture and Religious and Moral Education. PSLE results provide feedback across different levels of the education system in terms of the learner's achievement of important knowledge and skills within the primary education programme. This report presents a summary of the 2014 PSLE results. It reports performance at national, district, and city/town council levels and by subject and gender. The report is structured as follows:

- 1.0 Candidature
- 2.0 Overall Performance
- 3.0 Performance by District and Town/City Council
- 4.0 Performance by Subject
- 5.0 Performance by Gender
- 6.0 Summary of Results

1.0 CANDIDATURE

Table 1.1: PSLE CANDIDATURE IN 2012, 2013 AND 2014 BY SUBJECT			
SUBJECTS	2012	2013	2014
Setswana	42863	43086	42160
English	43583	43775	42797
Mathematics	43583	43775	42797
Science	43583	43775	42797
Social Studies	43583	43775	42797
Agriculture	43583	43775	42795
Religious and Moral Education	43538	43723	42754
Total Candidature	43583	43775	42797

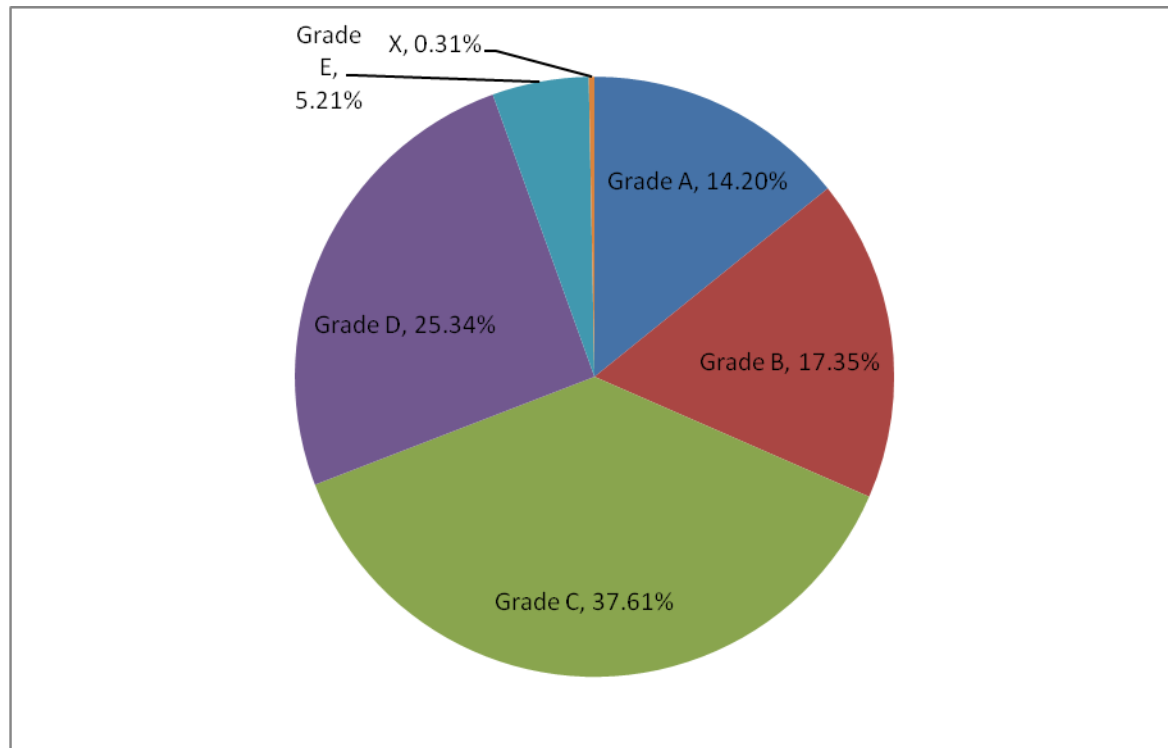
- A total of 42797 candidates sat for the 2014 Primary School Leaving Examination. Of this number, 21319 were females 21478 were males.
- The candidature decreased from 43775 in 2013 to 42797 in 2014, which represents a decrease of 978 (2.23%).

2.0 OVERALL PERFORMANCE

TABLE 2.1: 2014 PRIMARY SCHOOL LEAVING EXAMINATION RESULTS

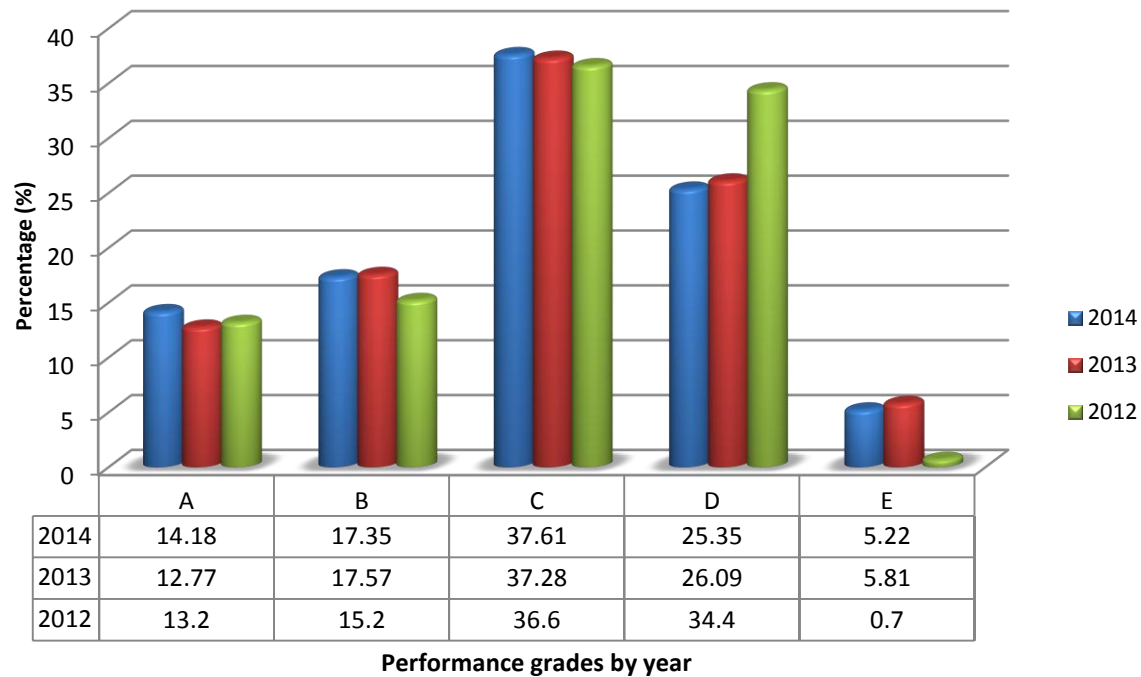
Grade	Candidature	Percentage	Cumulative %
A	6070	14.20	14.20
B	7424	17.35	31.55
C	16095	37.61	69.16
D	10845	25.34	94.56
E	2230	5.21	99.77
U	0	0	99.77
X	133	0.31	100
Total	42797	100%	

FIGURE 2.1: 2014 PRIMARY SCHOOL LEAVING EXAMINATION RESULTS



The majority of students obtained a Grade C (37.61%) as shown in the pie chart. Aggregating Grade A, Grade B and Grade C gives 69.2% suggesting that 69.2% of candidates obtained a Grade C or better. However, 25.34% obtained a Grade D while 5.21% obtained Grade E.

Figure 2.0: Comparison of PSLE Overall performance in 2014, 2013, 2012 and 2011

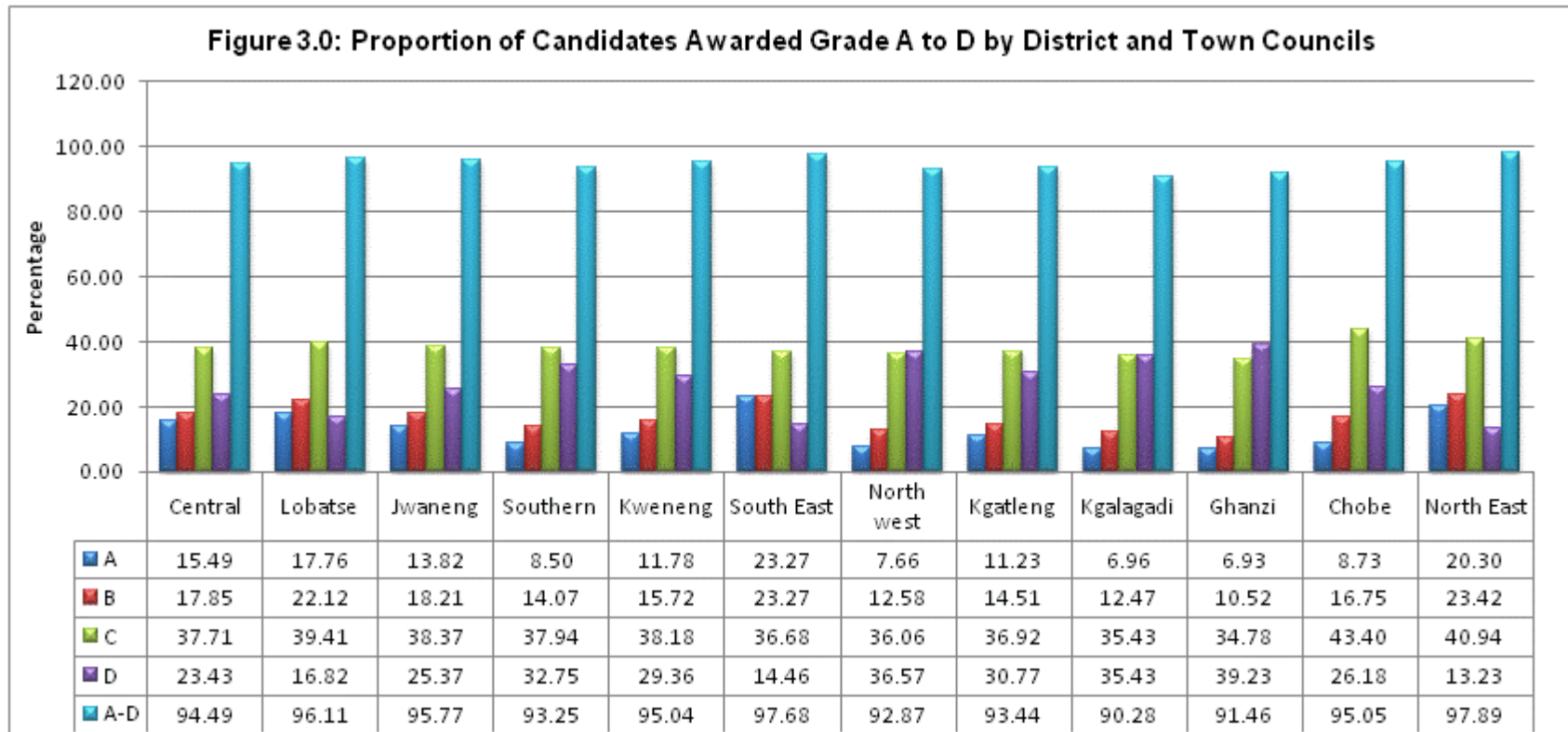


Performance in the 2014 PSLE results has increased by 1.43% from 12.77% in 2013 to 14.20% in 2014 for Grade A.

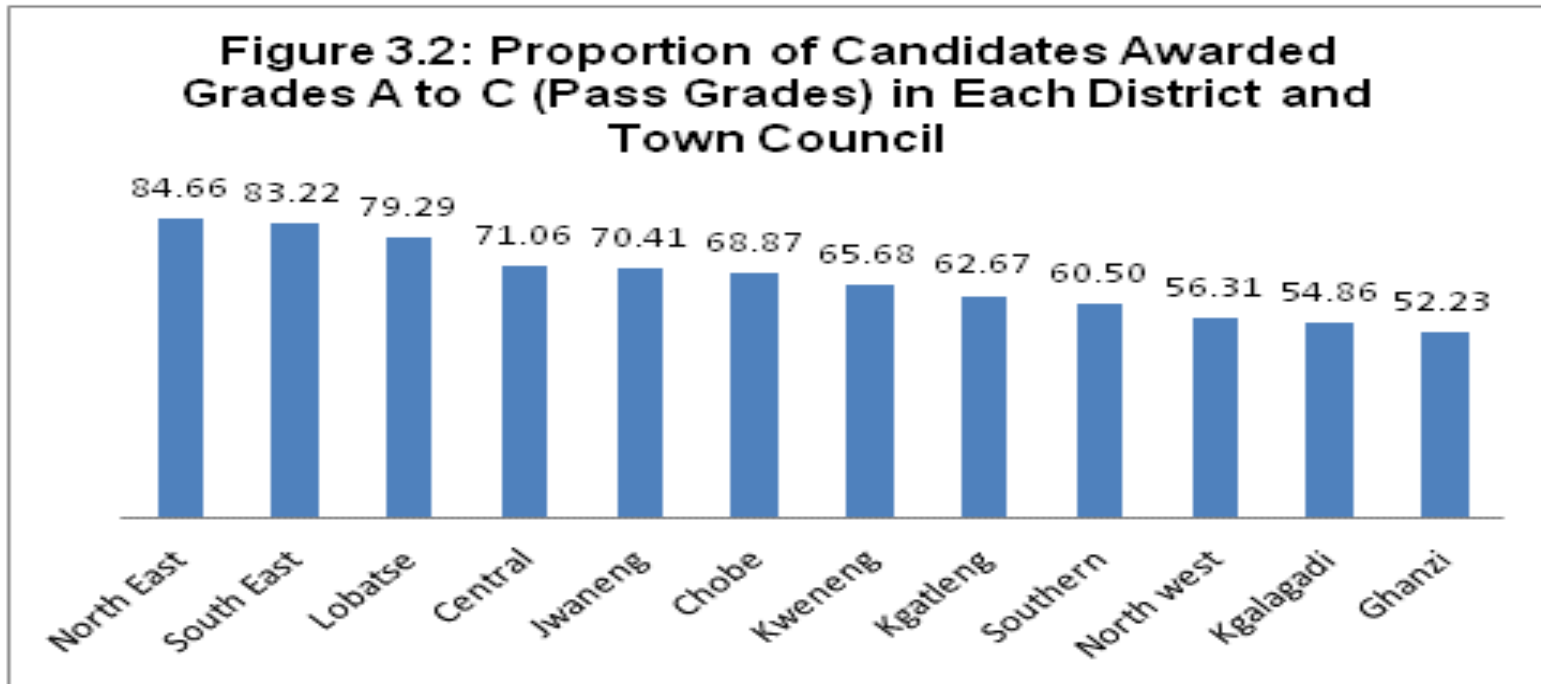
Percentage of candidates obtaining grade B has declined by 0.22% from 17.57 in 2013 to 17.35% in 2014. Candidates at Grade C increased slightly by 0.33% to 37.61% in 2014 from 37.28% in 2013.

The proportion of candidates at grade D has decreased by 0.75% from 26.09% (2013) to 25.34% (2014). Grade E also had a decrease of 0.60% from 5.81% (2013) to 5.21% in (2014).

3.0 PERFORMANCE BY DISTRICT AND CITY/TOWN COUNCILS



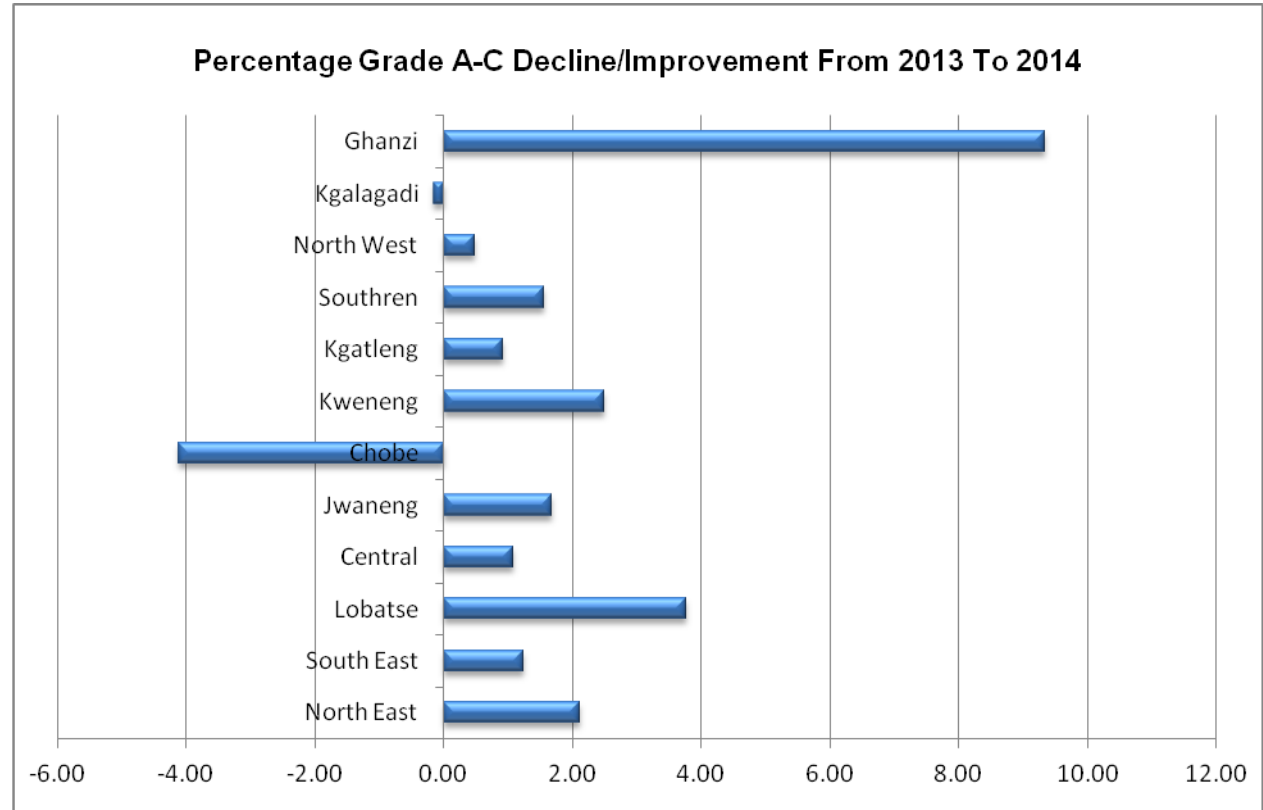
South East has the highest proportion of Grade A (23.27%) while Ghanzi has the least Grade A (6.93%). Ghanzi has the largest proportion of Grade D (39.23%).



North East District with 84.66% and South East District with 83.20% performed significantly higher than other districts. The least performing district is Ghanzi at 52.23%.

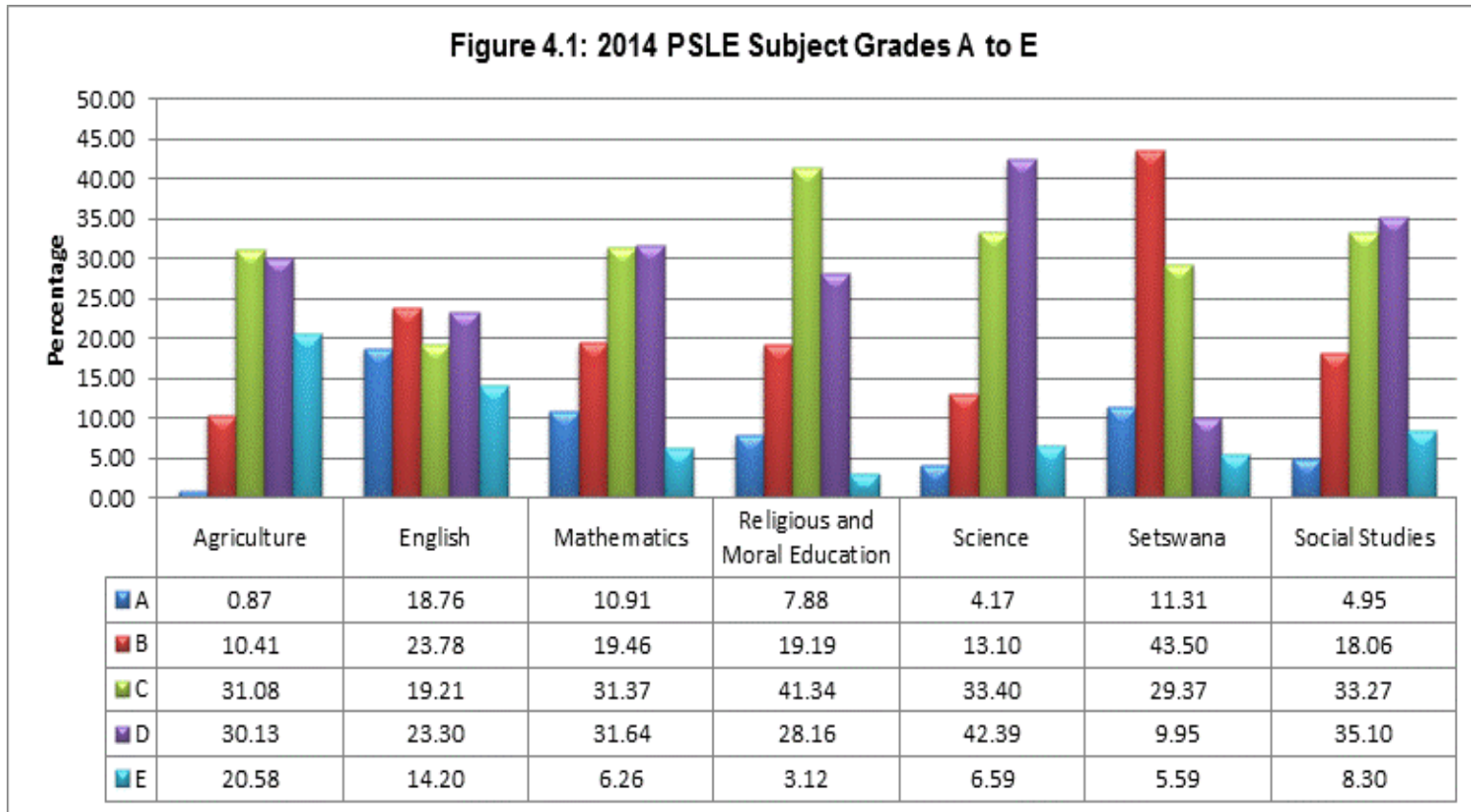
2014 PSLE RESULTS SUMMARY

District/ Town Council	Decline/ Improvement
North East	2.11
South East	1.25
Lobatse	3.77
Central	1.08
Jwaneng	1.69
Chobe	-4.11
Kweneng	2.50
Kgatleng	0.93
Southern	1.56
North west	0.48
Kgalagadi	-0.15
Ghanzi	9.34



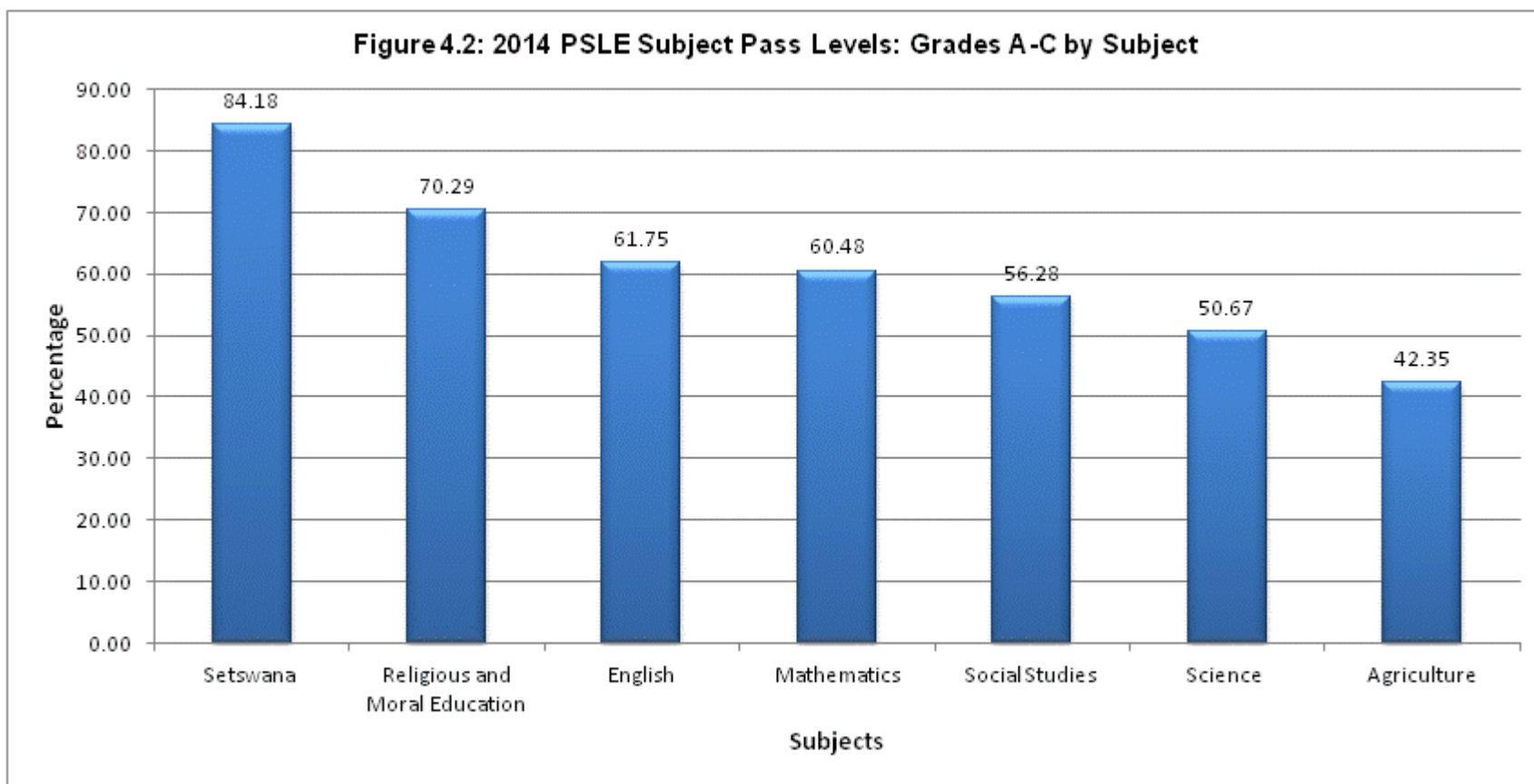
Compared to 2013, the proportion of candidates earning pass grades (grade A to C) increased in almost all districts with exception of Chobe (decline of 4.11%) and Kgalagadi (decline of 0.15) Ghanzi has the greatest improvement of 9.34%

4.0 PERFORMANCE BY SUBJECT

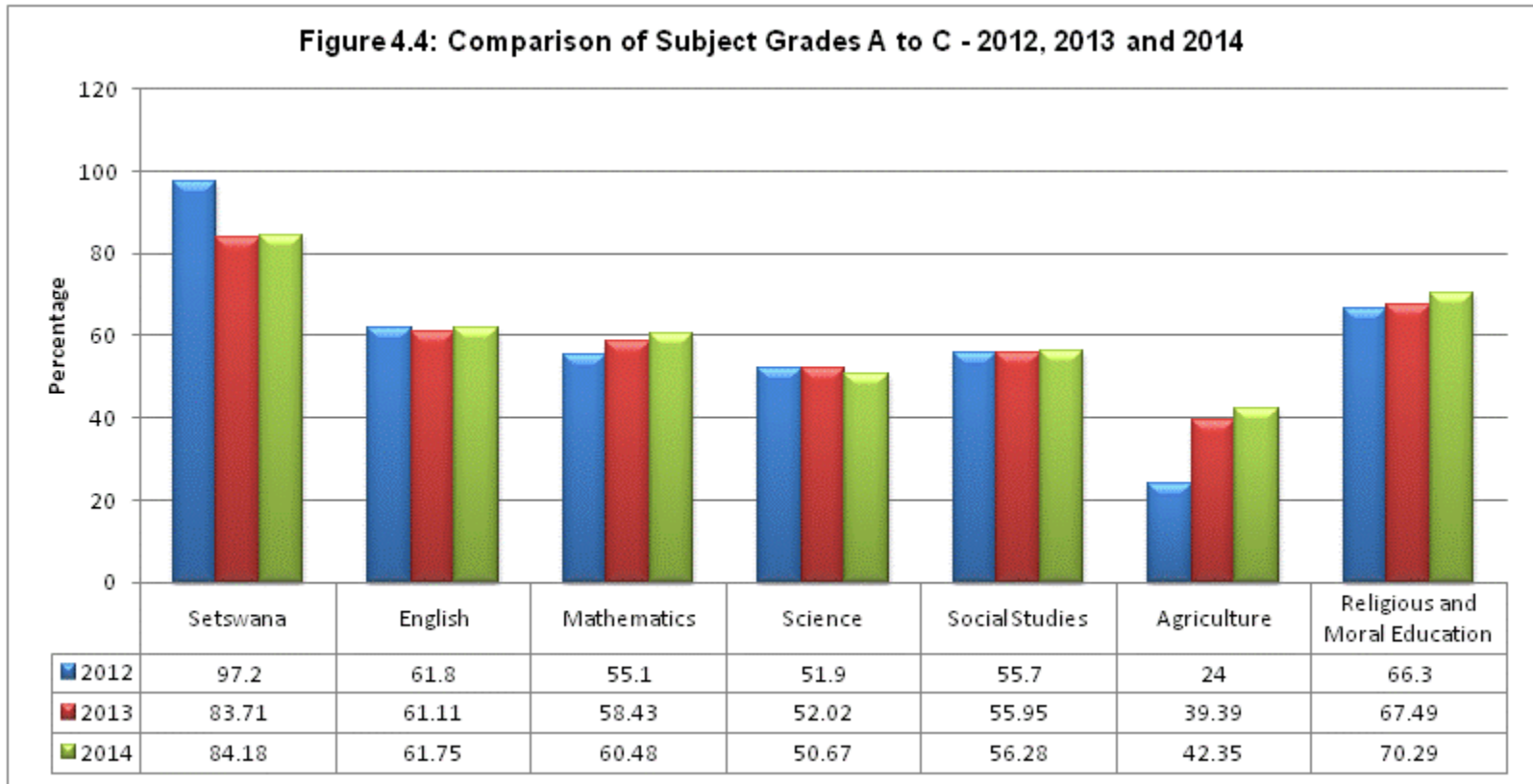


2014 PSLE RESULTS SUMMARY

- The results show the highest proportion of candidates awarded grade A in English, at 18.76%.
- The lowest proportion of candidates awarded grade A is in Agriculture at 0.87%.
- Setswana has the highest proportion of candidates at grade B with 43.50% compared to other subjects.
- Religious and Moral Education also has the highest proportion of candidates awarded C at 41.34% compared to other subjects.
- Science has the highest proportion of candidates awarded grade D at 42.39% when compared to other subjects.
- Agriculture has the highest proportion of candidates awarded grade E with 20.58%.



- Setswana registered the highest A to C grades at 84.18% followed by Religious and Moral Education at 68.41%.
- Agriculture has the lowest A to C grades at 42.36%.



Compared to 2013, there has been a slight improvement in performance in the following subjects: Setswana, English, Mathematics, Social Studies, Agriculture and; Religious and Moral Education, though in most instances it appears insignificant. Science shows slight decline, though insignificant.

5.0 OVERALL PERFORMANCE BY GENDER

Figure 5.1a: Overall 2012 PSLE by Gender

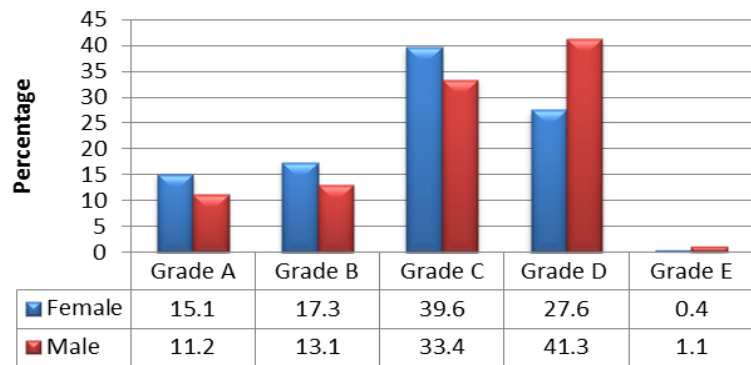


Figure 5.1b: Overall 2013 PSLE by Gender

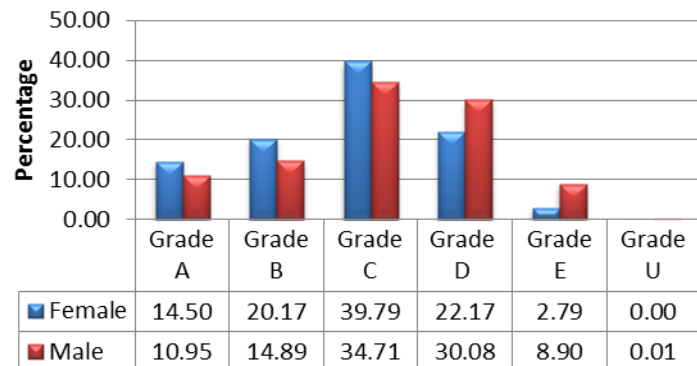
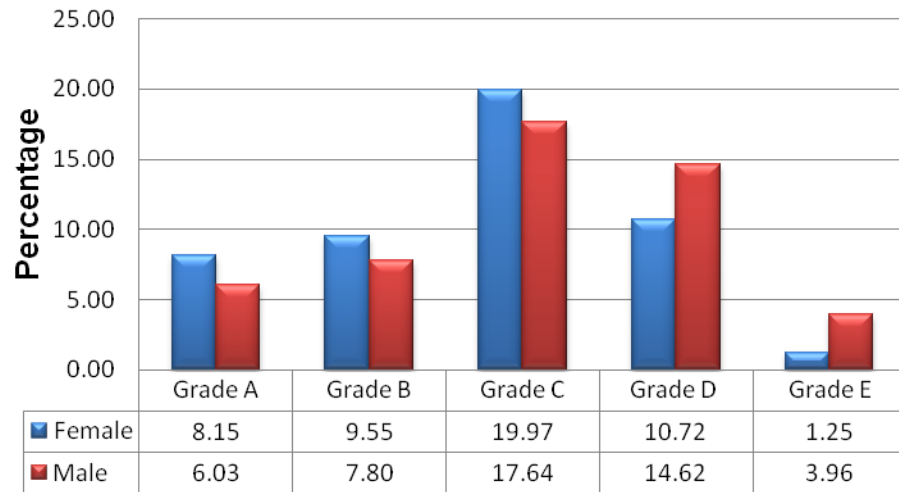
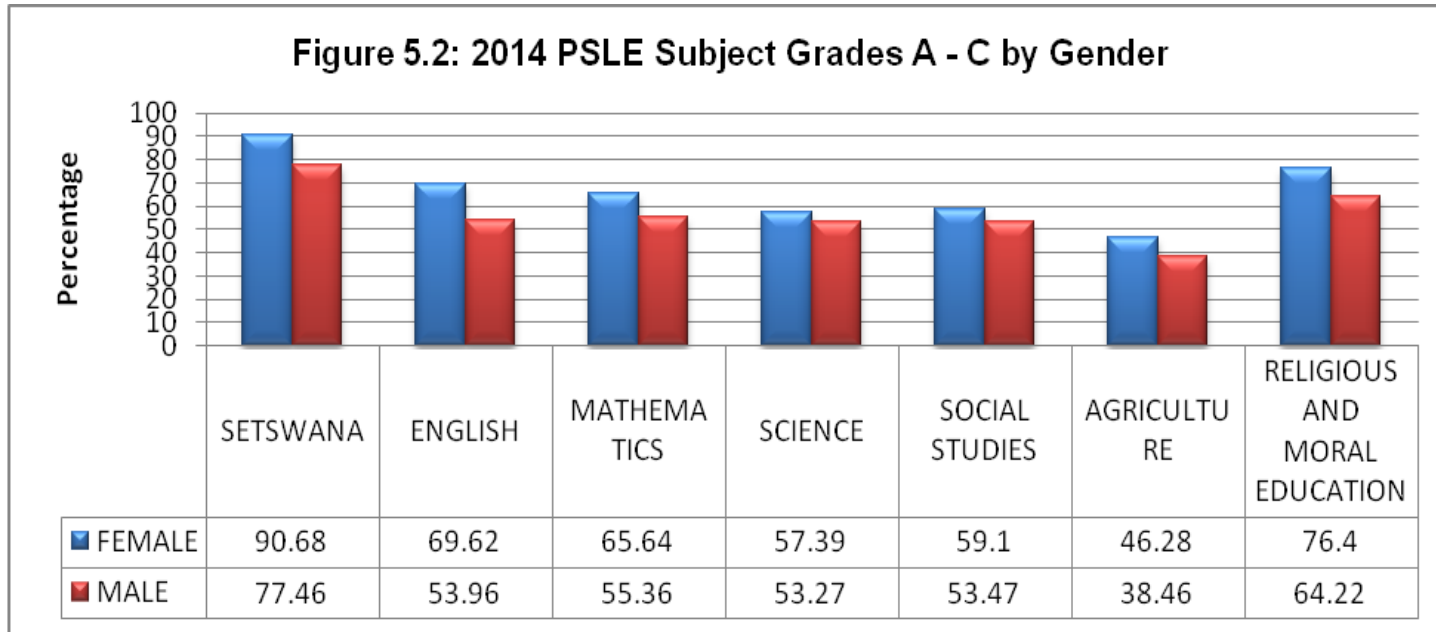


Fig 5c: Overall 2014 PSLE by Gender





- The 2014 results show the girls performing better than the boys across all subjects at A to C. The pattern is consistent across both the 2013 and 2012 results.

6.0 SUMMARY OF THE MESSAGE FROM THE 2014 PSLE RESULTS

- A total of 42797 candidates sat the 2014 PSLE compared to 43775 in 2013 and 43583 in 2012, representing a decrease of 2.23% in candidature between 2014 and 2013, following an increase 0.47% in candidature between 2013 and 2012 and an increase of 2.7% between 2012 and 2011.
- Overall, there is an increase (1.58%) in the percentage of candidates awarded grades A to C, with 69.2% in 2014 compared to 67.62% in 2013.
- The slight improvement above may be attributable to improvements in overall performance in almost all subjects, with performance in Setswana remaining more or less the same.
- Girls performed better than boys across all subjects.